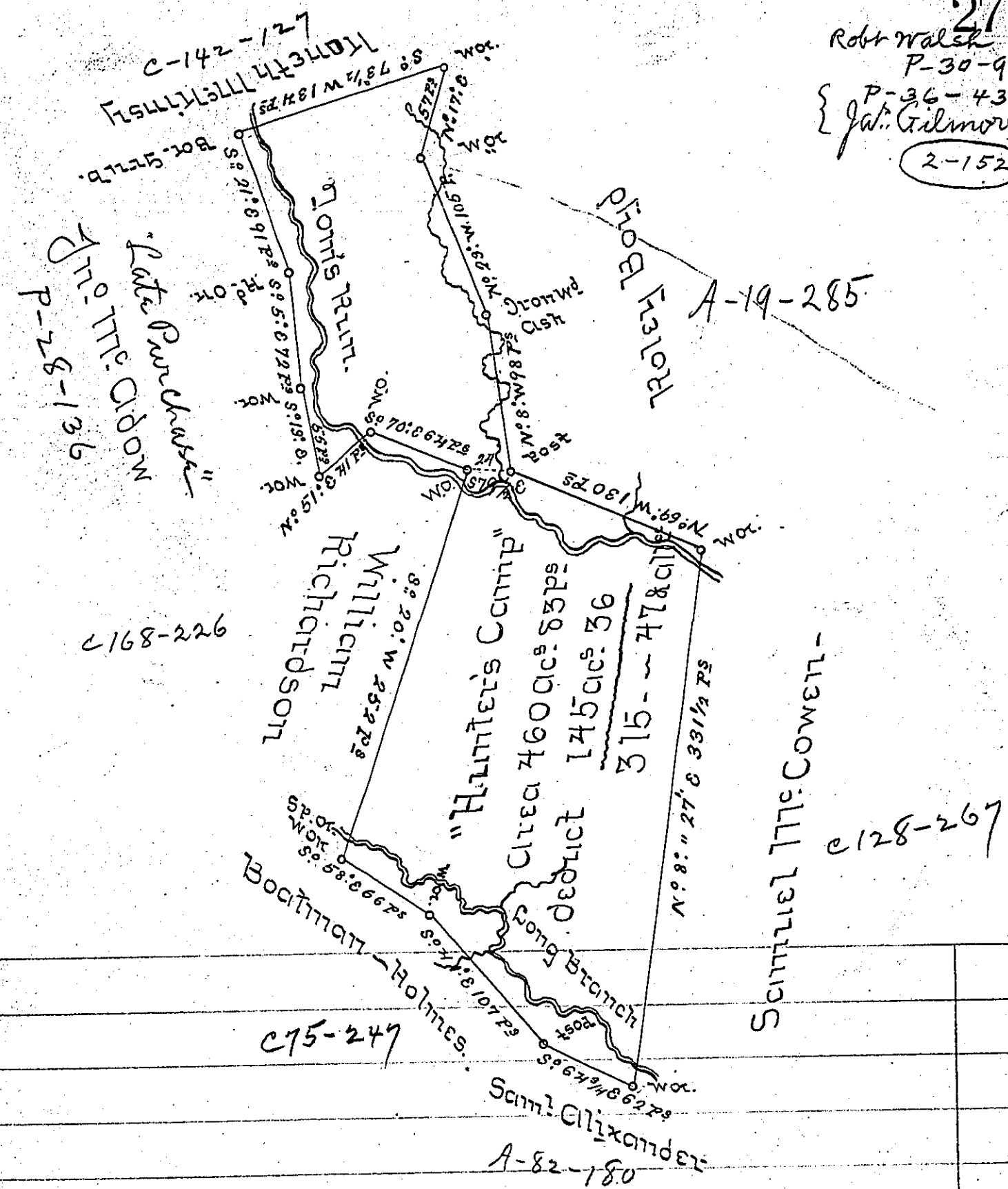


278
Robt Walsh
P-30-94
P-36-434
Jat. Gilmore
2-152



A Draught of a Survey called "Hunter's Camp" Situate on the Waters of Chartiers Creek in Washington County, containing 460 acs 83 ps and an Allow^{ce} of 6 PCent for Roads &c. executed Sept^r 4th 1786 in Pursuance of a Warr^t for 400 acs granted to James Kirkpatrick dated March 4th 1785

Geo. Wilkens Esq^r Sen^r of Pennsyla
Presley Newill
Matt^w Ritchie } U.S.
Now Allegheny Co.

IN TESTIMONY that the above is a copy of the original remaining on file in the Department of Internal Affairs of Pennsylvania, made conformably to an Act of Assembly approved the 16th day of February, 1833, I have hereunto set my Hand and caused the Seal of said Department to be affixed at Harrisburg, this fifteenth day of July 1905.

Loac R. Brown
Secretary of Internal Affairs.